

# Flow indicators for pipelines with ends for welding

## Series S-VA in stainless steel

## Series S-St in carbon steel



Sight flow indicator, series S-VA, type S-VA 65



Sight flow indicator, series S-St, type S-St 100

### Application:

VETROLUX® sight flow indicators, series S-VA / S-St with the new DIN lengths, are used for the observation of a flow of liquid in tubes and pipelines. Visibility may be considerably enhanced by combination with our proven light fittings for hazardous and safe areas. (Please see our respective leaflets.)

### Operating conditions:

Nominal pressure: 10 bar (PN 10)  
 PN 6 and PN 16: On request  
 Vacuum  
 Maximum temperature: 280 °C

### Standard materials:

Body material (series S-VA): 1.4435 (= AISI 316 L) / 1.4404 (= AISI 316 L)  
 (up to DN 100)  
 1.4571 (= AISI 316 Ti) (from DN 125)

Body material (series S-St): Carbon steel RSt 37-2  
 Cover flanges: Galvanised RSt 37-2 / C 22.8, zinked  
 Bolts: Galvanised socket head screws to DIN 912, 8.8  
 Glass discs: Borosilicate glass to DIN 7080 (Standard)  
 Sodium silicate glass to DIN 8902 (Option)

Gaskets product side: Graphite  
 cover side: KLINGERSil C4400

Other materials are available on request.

### Mounting position:

No restriction, pay attention to the flow direction!

### Options:

- Security version with double glazing
- Version **without** "drop-nose" for hygienic applications
- Cover flanges and screws in stainless steel
- With turbine
- With flap

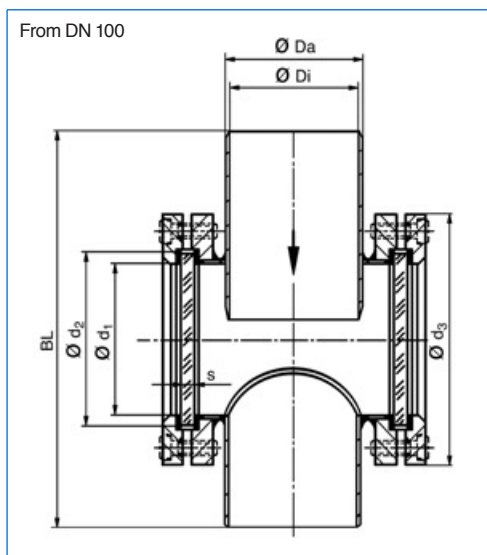
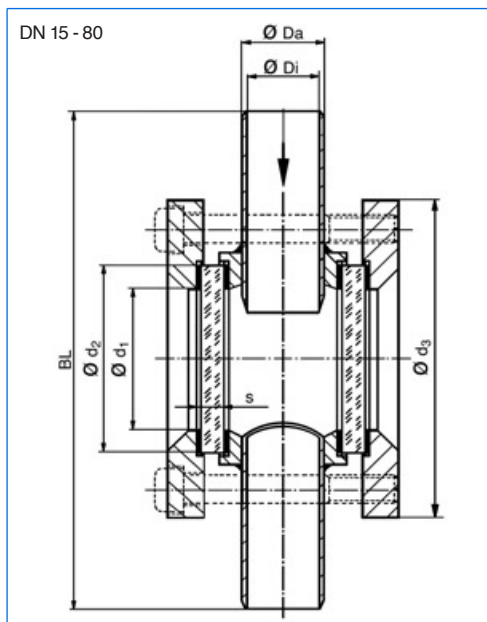
### Remarks:

When enquiring or ordering please **always** state the nominal pressure (PN) required.

### Ordering example:

1 piece VETROLUX® sight flow indicator for welding into position, body in stainless steel 1.4435 (= AISI 316 L), nominal pressure 10 bar (PN 10), nominal diameter (DN) 65:  
 1 piece S-VA 65-316 L-10-Graphite-KLINGERSil C4400

## Type selection table Dimensions



Type	DN	BL	Ø Da	Ø Di	Ø d <sub>3</sub> Ø d <sub>3</sub>	Ø d <sub>1</sub>	number and size of bolts	Ø d <sub>2</sub>	s
S-VA	15	124	21,3	18,1	70/70	32	4 x M8	45	10
S-St	15	124		16,0					
S-VA	20	144	26,9	23,7	110	48	4 x M10	63	10
S-St	20	144		21,6					
S-VA	25	154	33,7	29,7	135	48	4 x M10	63	10
S-St	25	154		27,2					
S-VA	32	174	42,4	38,4	135	65	4 x M10	80	12
S-St	32	174		35,9					
S-VA	40	194	48,3	44,3	135	65	4 x M12	80	12
S-St	40	194		41,9					
S-VA	50	224	60,3	55,1	150	80	4 x M12	100	15
S-St	50	224		53,0					
S-VA	65	284	76,1	70,9	150	80	4 x M12	100	15
S-St	65	284		70,3					
S-VA	80	304	88,9	83,7	185	100	4 x M12	125	15
S-St	80	303		82,5					
S-VA	100	342	114,3	107,9	210	125	8 x M12	150	20
S-St	100	342		107,1					
S-VA	125	392	139,7	133,3	240	150	8 x M12	175	20
S-St	125	392		131,7					
S-VA	150	470	168,3	161,9	275	175	8 x M16	200	25
S-St	150	471		159,3					
S-VA	200	590	219,1	212,7	340	225	8 x M16	250	30
S-St	200	588		207,3					

Branch office / exclusive agent:

Do you wish for more information about our wide range of light fittings for use in hazardous or safe areas, about our range of circular sightglasses to DIN 28120/28121, screwed sightglasses similar to DIN 11851, rectangular or D-ended sightglasses, pipeline flow indicators, sideways or centrally operated wipers, hinged sightglasses, spraying devices or our complete sight and light-glass units VETROLUX®? Are you interested in other types, special versions or different protection degrees? If yes, please contact us, our branch office or our local agents – it is our business! You will find the necessary indications about our sales network on the Internet.

All dimensions in mm. Subject to changes without preliminary notice.



# MAX MÜLLER AG

PROCESS ILLUMINATION AND VISUAL OBSERVATION SYSTEMS

Hagmattstrasse 19 • CH - 4123 Allschwil / Switzerland

Telephone +41 61 487 92 92 • Telefax +41 61 487 92 99

www.maxmuellerag.com E-Mail: blt@maxmuellerag.com