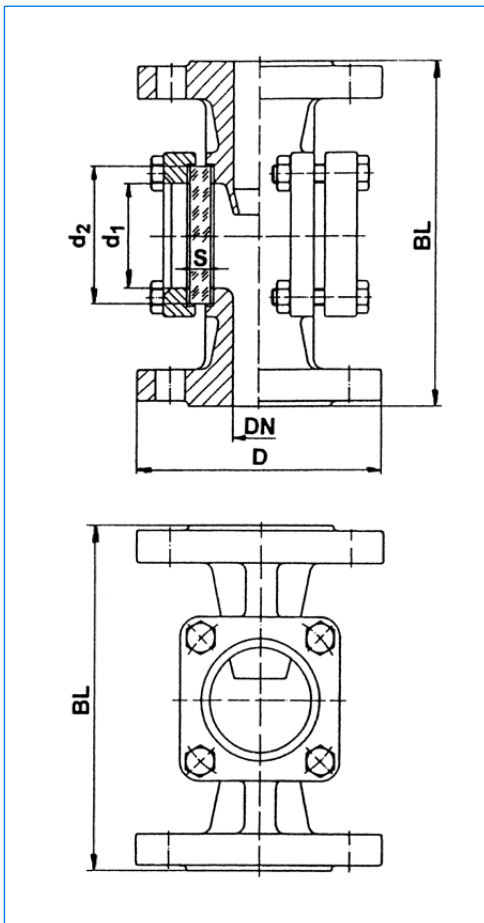


Flow indicators for pipelines with flanged ends for bolting

Series FDG in grey cast
Series FDS in steel cast
Series FDE in stainless steel



Sight flow indicator, type FDE 50, with sightglass light fitting type FKEL 5 dH WM, Ex d IIC T6, Ex tD A21 IP65 T80°C, Ex II 2 G + D, 230 V, 5 W, with opal glass screen «M»



All dimensions in mm. Subject to changes without preliminary notice.

Application:

VETROLUX® sight flow indicators are used for the observation of a flow of liquid in tubes and pipelines. The serially built-in drop-nose makes smallest flow rates visible. Visibility may be considerably enhanced by combination with our proven light fittings for hazardous and safe areas. (Please see our respective leaflets).

Operating conditions:

Nominal pressure: max. 16 (PN 16)
Vacuum
Maximum temperature: 150 °C or 280 °C

Standard materials:

Body material: Series FDG: GG 25
Series FDS: GS-C 25
Series FDE: Stainless steel 1.4408
Cover flanges: Series FDG: GG 25 / RSt 37
Series FDS: C 22.8 / RSt 37-2
Series FDE: Stainless steel 1.4301 / 1.4571
Bolts: Series FDG / FDS: 4.6, zinked
Series FDE: A4-70
Glass discs: Borosilicate glass to DIN 7080 (Standard)
Sodium silicate glass to DIN 8902 (Option)
Gaskets product side: Graphite
cover side: KLINGERSil C4400
Other materials are available on request.

Certificates:

To be supplied against extra charge to DIN EN 10204.

Options:

- With flanges to ANSI standards
- With welding flanges
- With turbine
- With flap
- With heating jacket
- With sightglass light fittings

Ordering example:

1 piece VETROLUX® sight flow indicator with flanged ends, body in stainless steel 1.4408, nominal pressure 16 bar (PN 16), nominal diameter (DN) 80:
1 piece FDE 80-1.4408-16-Graphite-KLINGERSil C4400

Dimensions:

DN	D	BL	d1	d2	S (16 bar)
15	95	130	32	45	10
20	105	150	32	45	10
25	115	160	48	63	10
32	140	180	65	80	12
40	150	200	65	80	12
50	165	230	80	100	15
65	185	290	80	100	15
80	200	310	100	125	20
100	220	350	125	150	25
125	250	400	150	175	25
150	285	480	175	200	30 **
200	340 *	600	175	200	30 **
250	405 *	730	175	200	30 **

* May also be delivered in PN 10

** 16 bar only with glass discs from borosilicate to DIN 7080